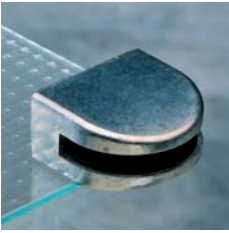




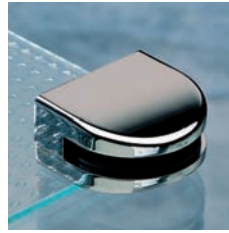
Farben und Beschichtungen für den Innenbereich/colours and surfaces for indoor



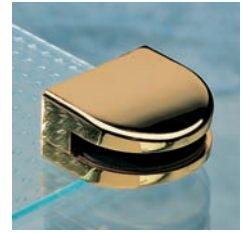
ZN0
Zink roh/
zinc rough



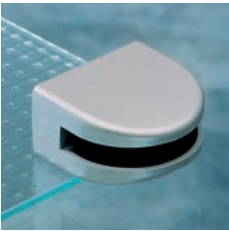
ZN1
Zink geschliffen, poliert,
mattverchromt/ zinc ground, polished,
matt chrome finish
ZN1-K: mit Klarlack/with clear lacquer



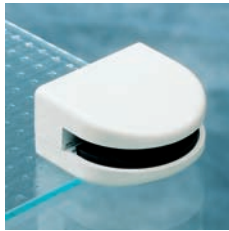
ZN5
Zink geschliffen, poliert,
glanzverchromt/zinc ground, polished,
bright chrome finish



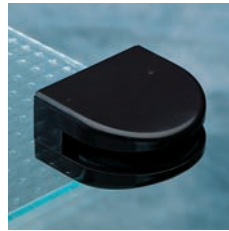
ZN7
Zink geschliffen, poliert,
glanzvergoldet/zinc ground,
polished, bright gold finish



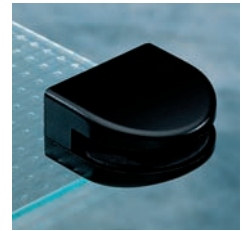
ZN12
Zink alufarbig pulverbeschichtet/
zinc aluminium colour, powder coated



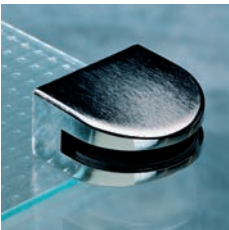
ZN14
Zink weiß RAL 9016
pulverbeschichtet/
zinc white RAL 9016,
powder coated



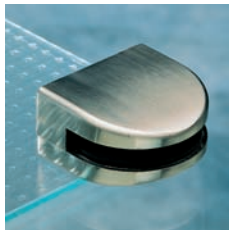
ZN15
Zink braun RAL 8019
pulverbeschichtet/
zinc brown RAL 8019,
powder coated



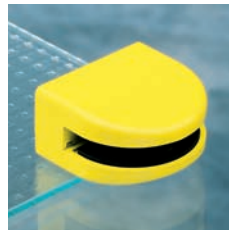
ZN16
Zink schwarz RAL 9005
pulverbeschichtet/
zinc black RAL 9005,
powder coated



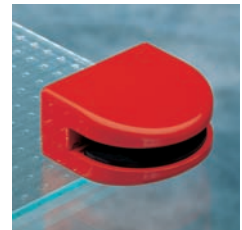
ZN20
Zink geschliffen, mattverchromt
(Edelstahleffekt)/zinc ground, matt
chrome finish (stainless steel effect)
ZN20-K: mit Klarlack/with clear lacquer



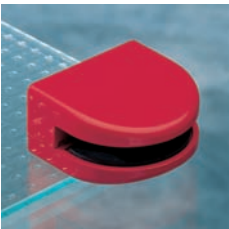
ZN22
Zink Edelstahlfinish/zinc stainless steel
finish (simulated)
ZN22-K: mit Klarlack/with clear lacquer



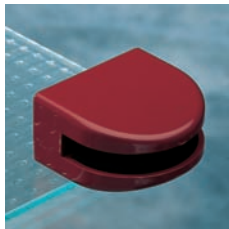
RAL
Zink pulverbeschichtet in RAL-Farben,
z.B. 1016 Schwefelgelb/ zinc powder
coated in RAL colours, e.g. 1016
sulphur yellow



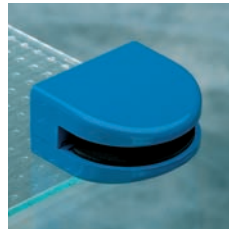
RAL
Zink pulverbeschichtet in RAL-Farben,
z.B. 2002 Blutorange/
zinc powder coated in RAL colours, e.g.
2002 blood orange



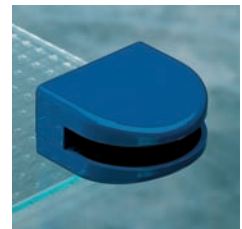
RAL
Zink pulverbeschichtet in RAL-Farben,
z.B. 3027 Himbeerrot/
zinc powder coated in RAL colours, e.g.
3027 raspberry red



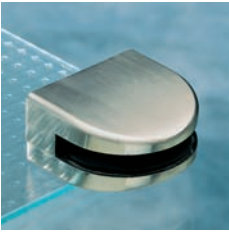
RAL
Zink pulverbeschichtet in RAL-Farben,
z.B. 3004 Purpurrot/
zinc powder coated in RAL colours, e.g.
3004 purple red



RAL
Zink pulverbeschichtet in RAL-Farben,
z.B. 5015 Himmelblau/
zinc powder coated in RAL colours, e.g.
5015 sky blue



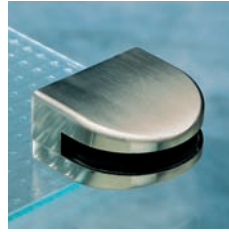
RAL
Zink pulverbeschichtet in RAL-Farben,
z.B. 5002 Ultramarinblau/
zinc powder coated in RAL colours, e.g.
5002 ultramarine blue



VA
Edelstahl matt geschliffet/
stainless steel turned finish



VA1
Edelstahl poliert/
stainless steel polished



VA2
Edelstahl matt gebürstet/
stainless steel matt brushed



ZN44
Zink Grundkörper Edelstahlfinish (ZN22),
Zink Dreieck geschliffen, mattvermessingt
(ZN2-G)/zinc base stainless steel finish
(simulated) (ZN22), zinc delta insert
ground, matt brass finish (ZN2-G)



ZN50
Zink Grundkörper Edelstahlfinish (ZN22),
Zink Dreieck glanzverchromt (ZN5)
zinc base stainless steel finish (simula-
ted) (ZN22), zinc delta insert bright
chrome finish (ZN5)