



Award News !

Tons is happy to announce LightQ, the Low Voltage IoT Spotlight Series has been awarded the prestigious Red Dot Award: Product Design [2022]! We again thank the Red Dot jury for judging our submission as superior among the many presented.

Tons integrates IoT module, including Signify WiZ or CASAMBI, into this system and present you an astonishing new light application.

It has been a tough year since the pandemic of covid-19. People are forced to stay home for much longer time than usual. Tons Consider this low voltage system can offer comfortable light effect and better functionality of lighting.

The system is designed with user-friendly feature as well. To avoid possible electronic damage, product adaptor is good for bi-directional installation.

By a new intuitive switch design, the luminaire will light up with handy way for your desired effect.

Thanks to its super micro fixtures, spot, pendant, and linear one.

Whole system is very neat after installation.

It leaves the focus on what is being illuminated.

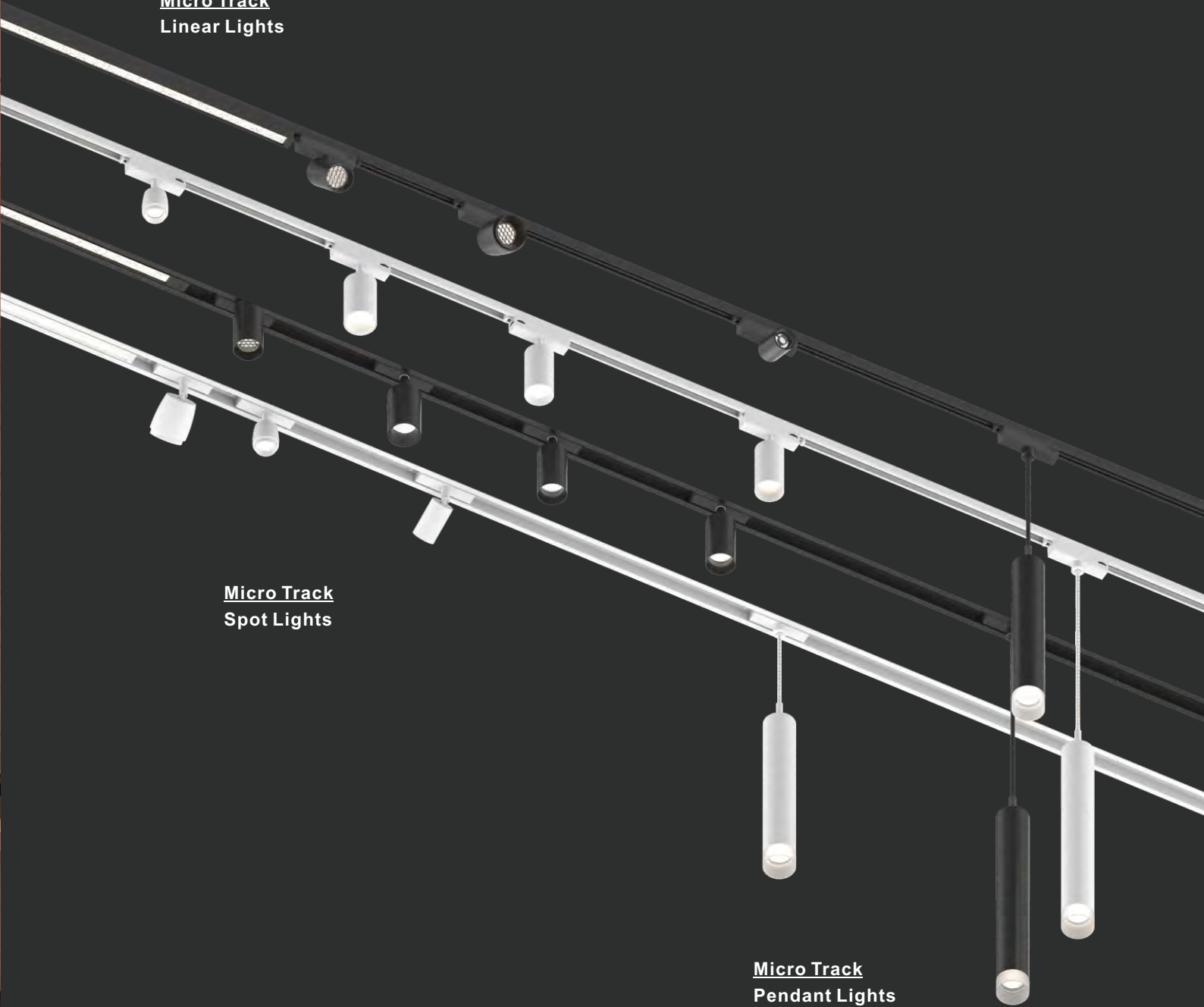
Track profile is with the slimmest section, only 14mm width for surface mounted ver. and 28mm for recessed ver., moreover, we include extended wall ver. track to hide adapter for fixture with more sleek style.

The surface coating can be matte black or white.

As the trend of human-centric lighting and smart control solutions, Light Q with sufficient lumen package to 1000lm is perfect for household lighting and hospitality lighting.



Micro Track
Linear Lights



Micro Track
Spot Lights

Micro Track
Pendant Lights



reddot winner 2021

Titan.

Low Voltage - Micro Track System

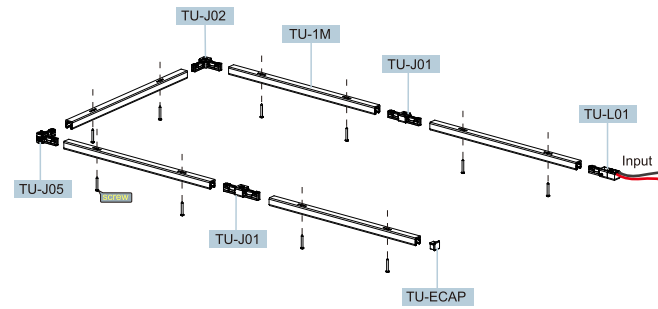
Surface Mounted U-Shape

Features

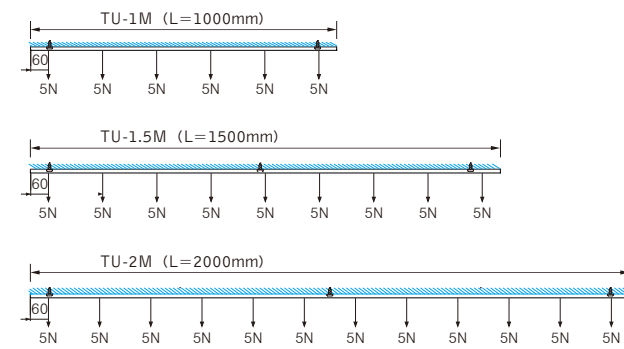
- The micro track family is with various length, 1, 1.5, and 2m
- Different connectors are available to allow maximum flexibility to meet project's requirements
- The adjustable connector can adjust from 90° to 180° to increase installation directions.
- Track system, powered by 24V transformers is safe-to-touch low voltage system and easy for end user to change the track luminaire.
- With 14 mm width coating in matte black or white, the track represents a clean and neat appearance.
- Even in a very tiny width track system, reposition the luminaire is also very end-user friendly by finger push-switch.



reddot winner 2021



LOAD OF TU SERIES TRACK



TU - 1M/1.5M/2M
Surface Mounted U-Shape
Aluminium
DC 24V, MAX 8A
L=1000mm;1500mm
2000mm
Color: □ WK ■ BJ

TU - L01
Live end
Plastic
DC 24V, MAX 8A
Color: □ WU ■ BK
Input wire: 1.0mm² (18AWG)

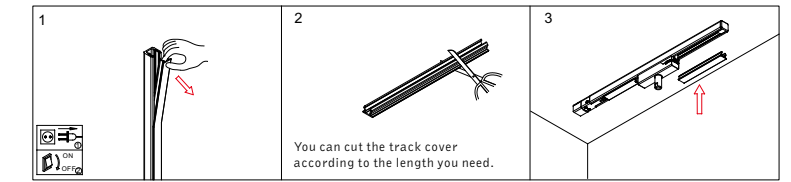
TU - J01
Straight-connector
Plastic
DC 24V, MAX 8A
Color: □ WU ■ BK

TU - J02
L-shape connector
Plastic
DC 24V, MAX 8A
Color: □ WU ■ BK

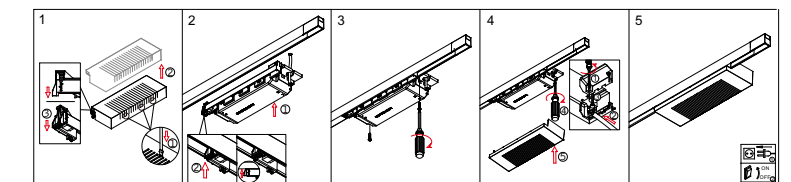
TU - J05
Adjustable-connector
plastic
DC 24V, MAX 8A
Color: □ WU ■ BK

TU - ECAP
End cap
Plastic
Color: □ WU ■ BK

TU - C01-1M/1.5M/2M
Track cover
Plastic
For TU-1M/1.5M/2M
Color: □ WU ■ BK



TU - T100
Driver Housing
Plastic
Max load : N TBD
DC 24V, MAX 8A
Color: □ WU ■ BK



Compatible:
Tridonic LC 60W & AcTec DIM 24-100 Driver

*TU-T100 can be located in anywhere on the TU/TUH Track for power input.

LUMEN FOR LIGHT HEAD AND CORRESPONDING ADAPTER

	Light Head	Adapter	Lumen (lm)
	SA-532A	TU-233-D (Output: DC 2.8 - 10V, 700mA)	180
	SA-532B	TU-223-D (Output: DC 2.8 - 18.7V, 500mA)	550
	SA-541B	TU-233-D (Output: DC 2.8 - 10V, 700mA)	180
	SA-542B	TU-203-D (Output: DC 2.8 - 18.7V, 200mA)	400
	SA-541A	TU-233-D (Output: DC 2.8 - 10V, 700mA)	180
	SA-542A	TU-203-D (Output: DC 2.8 - 18.7V, 200mA)	400
	PAM-109A	TU-203-D (Output: DC 2.8 - 18.7V, 200mA)	400
	PAM-109B	TU-213-D (Output: DC 2.8 - 18.7V, 350mA)	600
		TU-213-D (Output: DC 2.8 - 18.7V, 350mA)	600

ALLOWED QUANTITIES OF ADAPTER LOADING ON REFERENCED DRIVER

Control	Driver	Specification of Adapter			
		TU-203-D DC 2.8-18.7V, 200mA, 5.3W	TU-213-D DC 2.8-18.7V, 350mA, 8W	TU-223-D DC 2.8-18.7V, 500mA, 7.7W	TU-233-D DC 2.8-10V, 700mA, 3.4W
On-off	Tridonic LC 35W 24V SC SNC	5pcs	3pcs	3pcs	8pcs
	Tridonic LC 60W 24V SC SNC	9pcs	6pcs	6pcs	16pcs
	Tridonic LC 100W 24V SC SNC	16pcs	10pcs	11pcs	25pcs
Triac Dim	AcTEC DIM24-100	16pcs	10pcs	11pcs	25pcs

AcTec Driver is compatible with Schneider Electric SBD200LED, and AcTec D350 Dimmer. Customer once has his own driver and dimmer, please proceed relevant test to check compatibility. For more information, please contact your sales representative.

Note:

- Low voltage system is very common to encounter the compatibility issue between the driver and luminaires. The listed drivers are tested applied, please contact your sales representative for some technical supports.
- Low voltage system is also common to be affected by installation quality or voltage drop. When installing certain quantities of luminaire into our track system, we suggest that driver shall be calculated as 80% wattage of specification.
The track length shall be limited to 10m with our connection accessories as well. If you have specific requirement, please check with your sales representative.
- Once there is requirement for system control for dimming the micro track luminaires, please ensure the compatibility among the control system, driver and luminaires.
- In order to ensure whole system loading 8A safely, the wire must be able to withstand the corresponding load. After verification, at output wires from the driver must greater than 1.0mm² (18AWG) grade to ensure safety.

Titan.

Low Voltage - Micro Track System

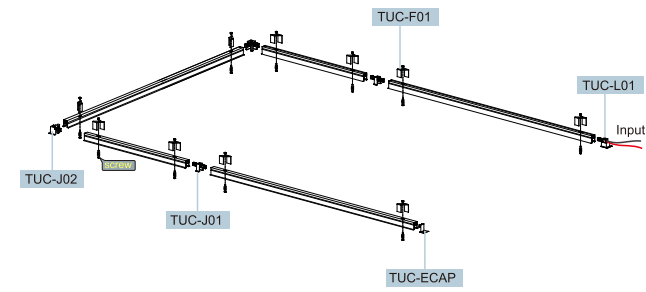
Recessed U-Shape

Features

- Very tinny and slim low-voltage track system in the market.
- The recessed track is provided with various length as 1, 1.5, and 2 meters to fit your application.
- Both L-shape and straight connector are available to allow maximum flexibility in projects.
- Track system with 1-circuit can be powered by 24V transformers. The safe-to-touch low voltage system is reliable and complies with the regulation of low voltage directive (SELV).
- Two extended wings from the body of track hides the adapter of Titan low voltage series luminaire, which make lights installed on the track blend into the ceiling without any excess part.



reddot winner 2021

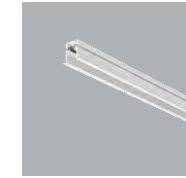
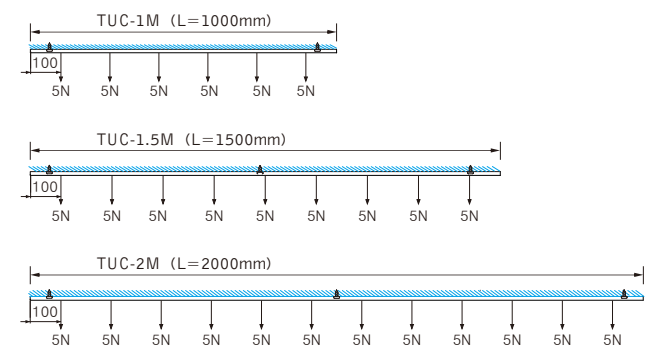


DIMENSION

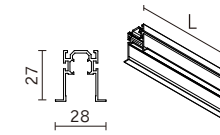
Cut out (mm)

Component	Dimensions (mm)	Diagram
TUC-1M/1.5M/2M	L:1000/1500/2000 x W:23	
TUC-L01	L:24 x W:23	
TUC-J01	L:14 x W:23	
TUC-J02	L:25 x W:23	
TUC-ECAP	L:2 x W:23	
TUC-F01	W:23	

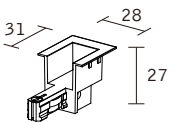
LOAD OF TUC SERIES TRACK



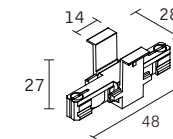
TUC-1M/1.5M/2M
Recessed U-Shape
Aluminium
DC 24V, MAX 8A
L=1000mm; 1500mm
2000mm
Color: □ WU ■ BK



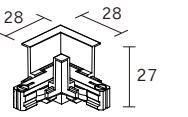
TUC-L01
Live end
Plastic
DC 24V, MAX 8A
Color: □ WU ■ BK
Input wire: 1.0mm² (18AWG)



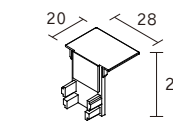
TUC-J01
Straight-connector
Plastic
DC 24V, MAX 8A
Color: □ WU ■ BK



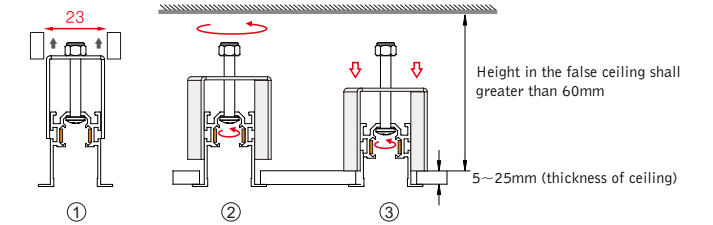
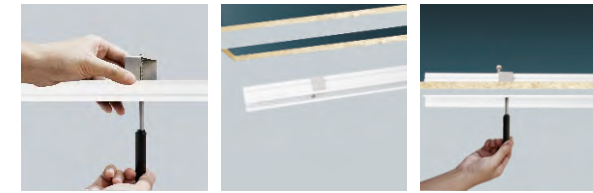
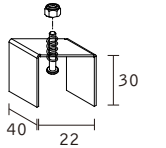
TUC-J02
L-shape connector
Plastic
DC 24V, MAX 8A
Color: □ WU ■ BK



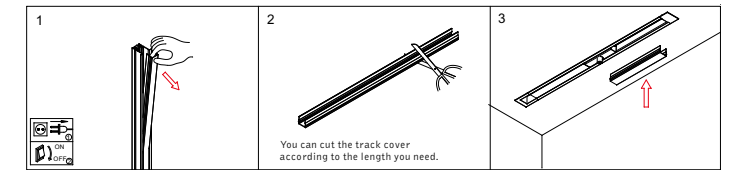
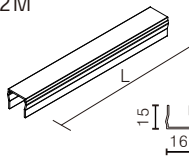
TUC-ECAP
End cap
Plastic
Color: □ WU ■ BK



TUC-F01
Standard accessory
for TUC track.
Track fixed plate
Stainless Steel



TUC-C01-1M/1.5M/2M
Track cover
Plastic.
For TUC-1M/1.5M/2M
Color: □ WU ■ BK



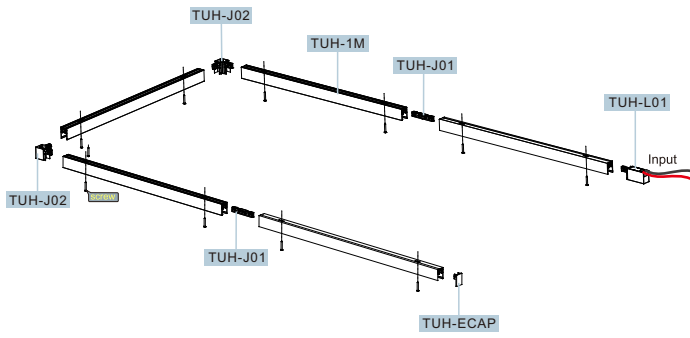
Low Voltage / Micro Track and Track Lights

Low Voltage / Micro Track System

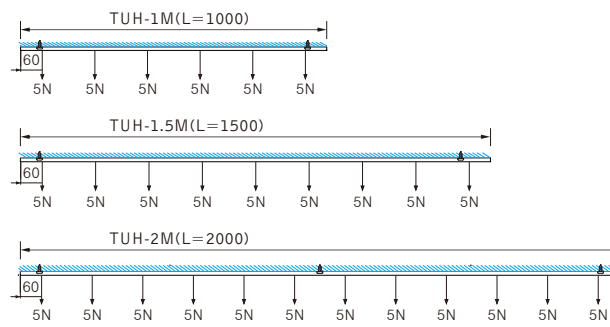
High U-Shape

Features

- New micro track with extended wall to hide adapter for fixture is with various length, 1, 1.5 and 2m.
- Ceiling-mounted or pendant installation is possible with optional accessory.
- Different connectors are available to allow maximum flexibility to meet project's requirements.
- Track system, powered by 24V transformers is safe-to-touch low voltage system and easy for end user to change the track luminaire.
- With 19 mm width coating in matte black or white, the track represents a clean and neat appearance.
- Even in a narrow space within the track, reposition of fixtures is user-friendly by finger push-switch.
- Various connectors and accessories are available to build a comprehensive lighting system.



LOAD OF TU SERIES TRACK



TUH-1M/1.5M/2M
High U-Shape
Aluminium
DC 24V, MAX 8A
L=1000mm;1500mm
2000mm
Color: □ WK ■ BK

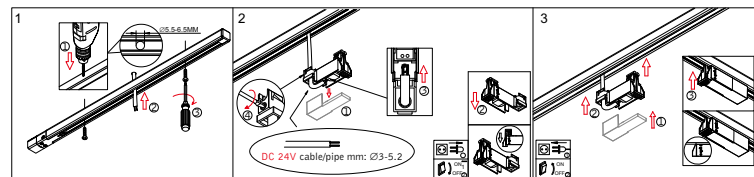
TUH-L01
Live end
Plastic
DC 24V, MAX 8A
Color: □ WU ■ BK
Input wire: 1.0mm² (18AWG)

TUH-J01
Straight-connector
Plastic
DC 24V, MAX 8A
Color: □ WU ■ BK

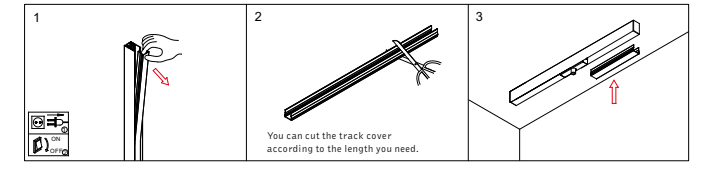
TUH-J02
L-shape connector
Plastic
DC 24V, MAX 8A
Color: □ WU ■ BK

TUH-L02A
Power connector, Plastic
for surface mounted
DC 24V, MAX 8A
Color: □ WU ■ BK

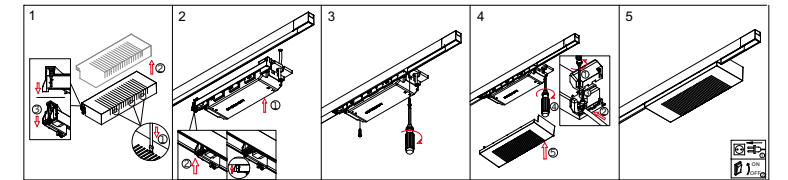
TUH-ECAP
End cap
Plastic
Color: □ WU ■ BK



TUC-C01-1M/1.5M/2M
Track cover
Plastic.
For TUH-1M/1.5M/2M
Color: □ WU ■ BK



TU-T100
Driver Housing
Plastic
Max load: N TBD
DC 24V, MAX 8A
Color: □ WU ■ BK
Compatible:
Tridonic LC 60W & AcTec DIM 24-100 Driver

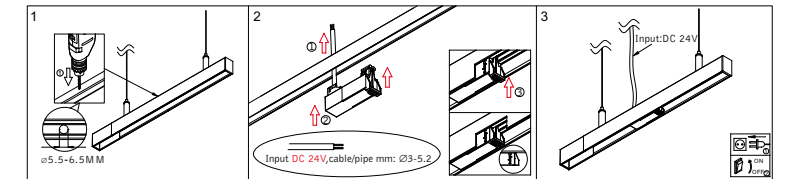


*TU-T100 can be located in anywhere on the TU/TUH Track for power input.

TUH-J01S
Straight connector: Steel.
For suspension application
Color: □ WK ■ BJ

TUH-J02S
L-connector: Steel.
For suspension application
Color: □ WK ■ BJ

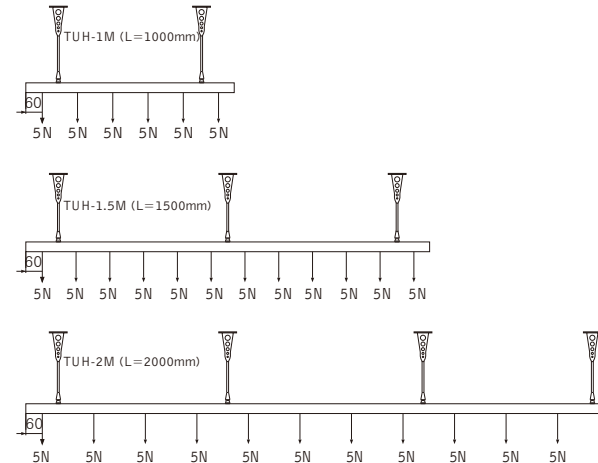
TUH-L02B
Power connector, Plastic
with cable outlet
DC 24V, MAX 8A
L=1500mm
Cable/ Pipe mm: Ø3-5.2
Color: □ WU ■ BK



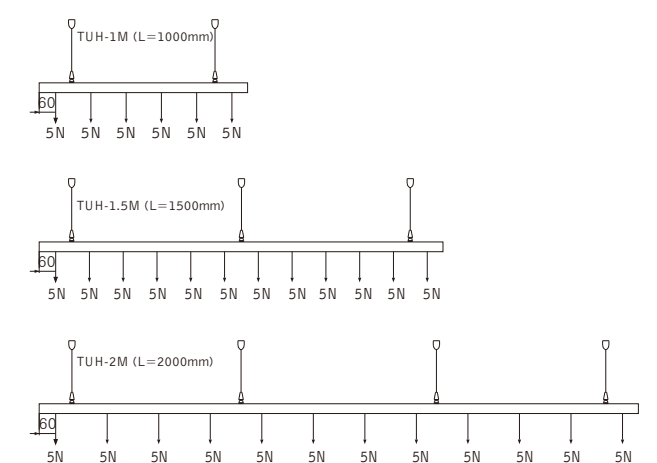
TUH-J06
Pendant crutch
Steel.
Supporter for ceiling mount only.
Max load: 30N (TBD)
L=200 - 1000mm
Color: □ WK ■ BJ

TUH-J09
Pendant cable
Steel.
Supporter for ceiling mount only.
Max load: 30N (TBD)
L=500 - 3000mm
Color: □ WK ■ BJ

SUSPENSION WITH PENDANT TUBE



SUSPENSION WITH STEEL WIRE



Titan.

Low Voltage - Micro Spot Lights

TITAN Adapters for:  TU track
 TUC track





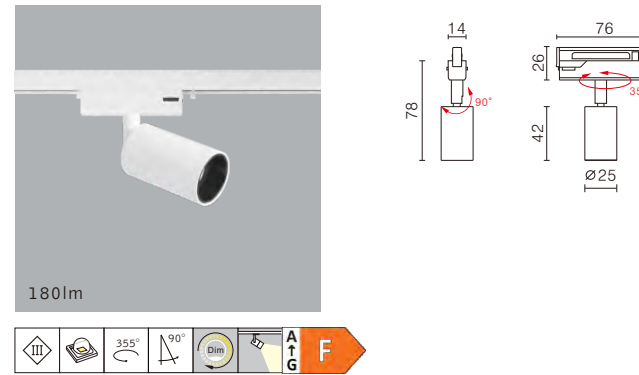
Features

- The very tiny micro track light system comes with elegant and mini-size features provide a very aesthetic out looking for interior design respect.
- Product series with good optical lens can provide an excellent light effect to replace halogen lamp application.
- The track can be powered by 24V voltage, is a much safer solution for the end user to adjust/install the luminaire.
- To enable end-user mount the spotlight without direction to be noticed within DC circuit, bridge rectifier is integrated into individual adapter to rectify the polarity.
- Micro track spot lights are with push-click-on adapter mechanism, easy install.
- The series can achieve 90-degree tilting and 355 degrees rotating adjustment.
- Micro track spot is designed with good glaring control hook; accessories honeycomb also ready on request.
- Individual brightness dimming function available.
- Eco-friendly LED chip good for energy saving and low maintenance cost.

Application

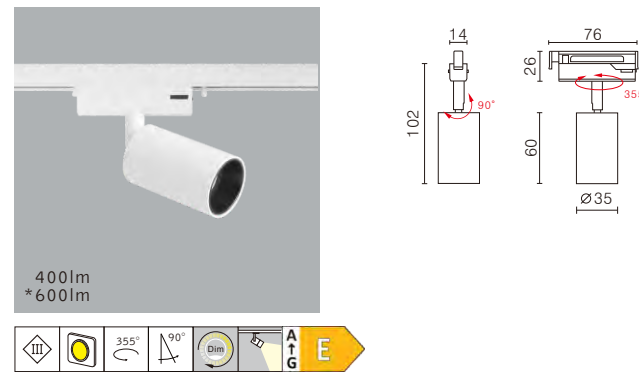
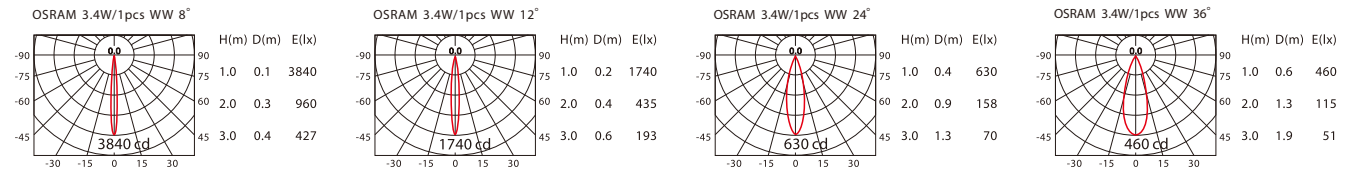
Mini size track and luminaire body; with precise light distribution is perfectly meets architecture and interior designer request. The series is good for highlighting artworks, restaurant, and private house.

Specification of Adapter	
Output Current	Adapter Dimable Color: <input type="checkbox"/> WU <input checked="" type="checkbox"/> BK Plastic. 
	
200mA ±5%	TU-203-D Input: 24V Output: DC 2.8 - 18.7V Brightness Dim 10-100%
350mA ±5%	TU-213-D Input: 24V Output: DC 2.8 - 18.7V Brightness Dim 10-100%
700mA ±5%	TU-233-D Input: 24V Output: DC 2.8 - 10V Brightness Dim 10-100%



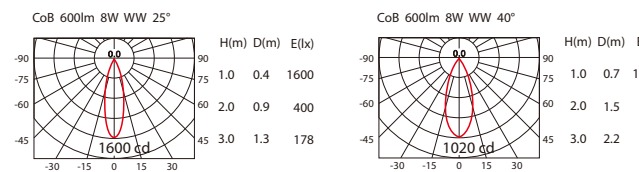
SA-541A/TU-233-D		Ra 90		
LED	LUMINAIRE CONSUMPTION	INPUT	LED COLOR	COLOR
OSRAM	SA-541A/TU-233-D: 3.4W	DC 24V	WW NW	WK BJ



Housing: aluminium, paint.



SA-542A/TU-203-D - SA-542A/TU-213-D		Ra 90		
CoB	LUMINAIRE CONSUMPTION	INPUT	LED COLOR	COLOR
CITIZEN	SA-542A/TU-203-D: 5.3W *SA-542A/TU-213-D: 8W	DC 24V	WW NW	WK BJ



Housing: aluminium, paint.



ACCESSORIES		
Optics		
Item code	Anti-Dazzle Ring	Honeycomb
SA-541A	AC-501A	
SA-542A		ACO-109H

Titan.

Low Voltage - Micro Spot Lights

TITAN Adapters for:  TU track
 TUC track



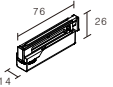
reddot winner 2021

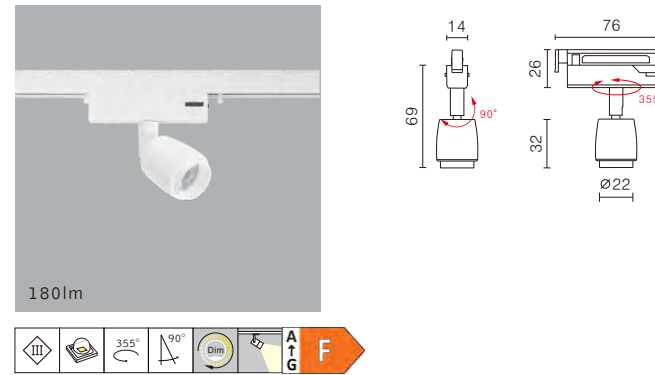
Features

- The very tiny micro track light system comes with elegant and mini-size features provide a very aesthetic out looking for interior design respect.
- Product series with good optical lens can provide an excellent light effect to replace halogen lamp application.
- The track can be powered by 24V voltage, is a much safer solution for the end user to adjust/install the luminaire.
- To enable end-user mount the spotlight without direction to be noticed within DC circuit, bridge rectifier is integrated into individual adapter to rectify the polarity.
- Micro track spot lights are with push-click-on adapter mechanism, easy install.
- The series can achieve 90-degree tilting and 355 degrees rotating adjustment.
- Micro track spot is designed with good glaring control hook; accessories honeycomb also ready on request.
- Individual brightness dimming function available.
- Eco-friendly LED chip good for energy saving and low maintenance cost.

Application

Mini size track and luminaire body; with precise light distribution is perfectly meets architecture and interior designer request. The series is good for highlighting artworks, restaurant, and private house.

Specification of Adapter	
Output Current	Adapter Dimable Color: <input type="checkbox"/> WU <input type="checkbox"/> BK Plastic. 
200mA ±5%	TU-203-D Input: 24V Output: DC 2.8 - 18.7V Brightness Dim 10-100%
350mA ±5%	TU-213-D Input: 24V Output: DC 2.8 - 18.7V Brightness Dim 10-100%
700mA ±5%	TU-233-D Input: 24V Output: DC 2.8 - 10V Brightness Dim 10-100%

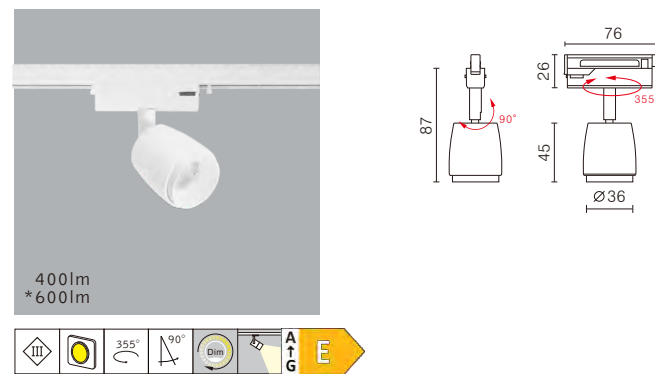
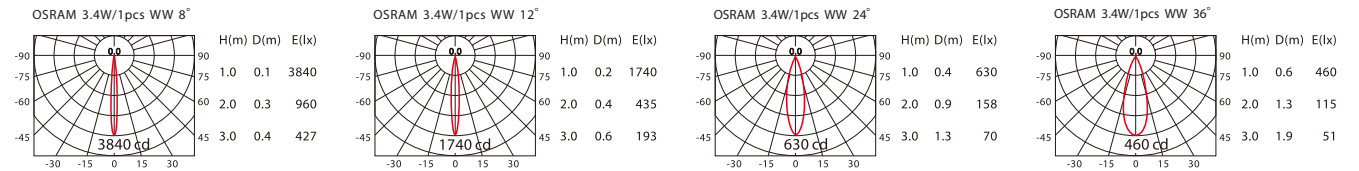


SA-541B/TU-233-D

Ra 90

LED	LUMINAIRE CONSUMPTION	INPUT	LED COLOR	COLOR
OSRAM	SA-541B/TU-233-D: 3.4W	DC 24V	WW NW	WK BJ

Housing: aluminium, paint.

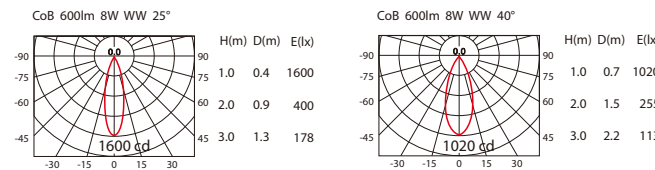


SA-542B/TU-203-D · SA-542B/TU-213-D

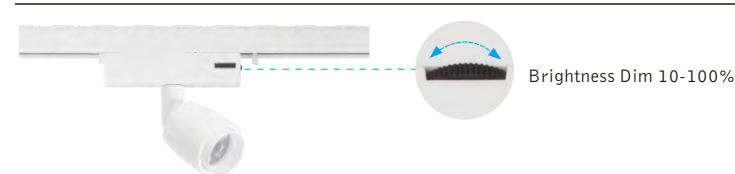
Ra 90

CoB	LUMINAIRE CONSUMPTION	INPUT	LED COLOR	COLOR
CITIZEN	SA-542B/TU-203-D: 5.3W *SA-542B/TU-213-D: 8W	DC 24V	WW NW	WK BJ



Housing: aluminium, paint.



BRIGHTNESS DIMMABLE




ACCESSORIES

Optics		
Item code	Anti-Dazzle Ring	Honeycomb
SA-541B	AC-501A	
SA-542B		ACO-109H

Titan.

Low Voltage - Micro Spot Lights

TITAN Adapters for:  TU track
 TUC track

Beam Angle Adjustable




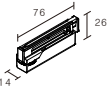
reddot winner 2021

Features


- The very compact micro track light system with elegant and mini-size design.
- 24V ultra-low voltage system, push-switch installation mechanism is very end-user friendly.
- To enable end-user mount the spotlight without direction to be noticed within DC circuit, bridge rectifier is integrated into individual adapter to rectify the polarity.
- Micro track spot lights, 3.4W, 7.7W, with delicated mechanism and neat out-looking.
- Beam angle adjustable, from 5° - 30° for SA-532A and 10° - 40° for SA-532B, both with high efficient and uniform light output.
- Individual brightness dimming function available.
- Compacted with short width and height, perfectly to meet the aesthetical requirement for architect and designer.
- Eco-friendly LED chip features as the energy saving and low maintenance cost.
- Color rendering better than Ra90.
- This series is convenient for end-user to adjust the focus and beam angle, meanwhile achieve the uniform light output, which is under the compromise to lower the efficiency of the luminaire.

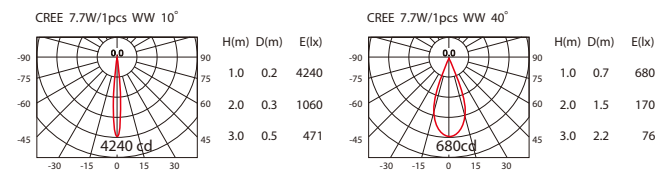
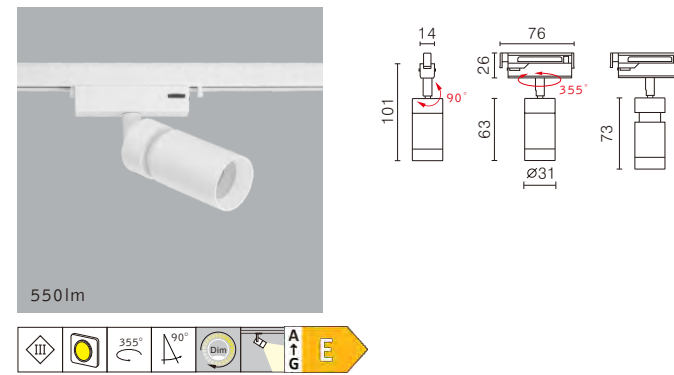
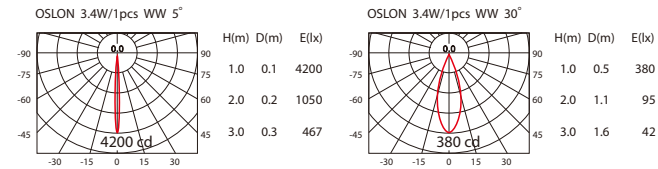
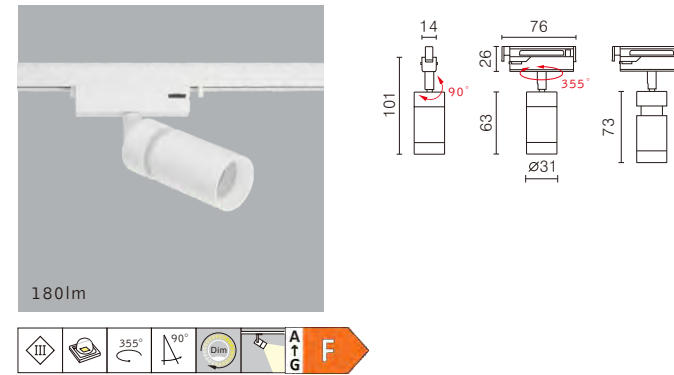
Application

Precise light distribution is not only good for highlighting artworks in the showcase, but also good for restaurant and other private house.

Specification of Adapter	
	Adapter Dimable  Color: <input type="checkbox"/> WU <input type="checkbox"/> BK Plastic. 
Output Current	
500mA ±5%	TU-223-D Input: 24V Output: DC 2.8 - 18.7V Brightness Dim 10-100%
700mA ±5%	TU-233-D Input: 24V Output: DC 2.8 - 10V Brightness Dim 10-100%

ACCESSORIES

Optics	
Item code	Honeycomb
All series	AC0-109H



SA-532A/TU-233-D

Ra 90

LED	LUMINAIRE CONSUMPTION	INPUT	LED COLOR	COLOR
OSRAM	SA-532A/TU-233-D: 3.4W	DC 24V	<input type="checkbox"/> WW <input type="checkbox"/> NW	<input type="checkbox"/> WK <input type="checkbox"/> BJ

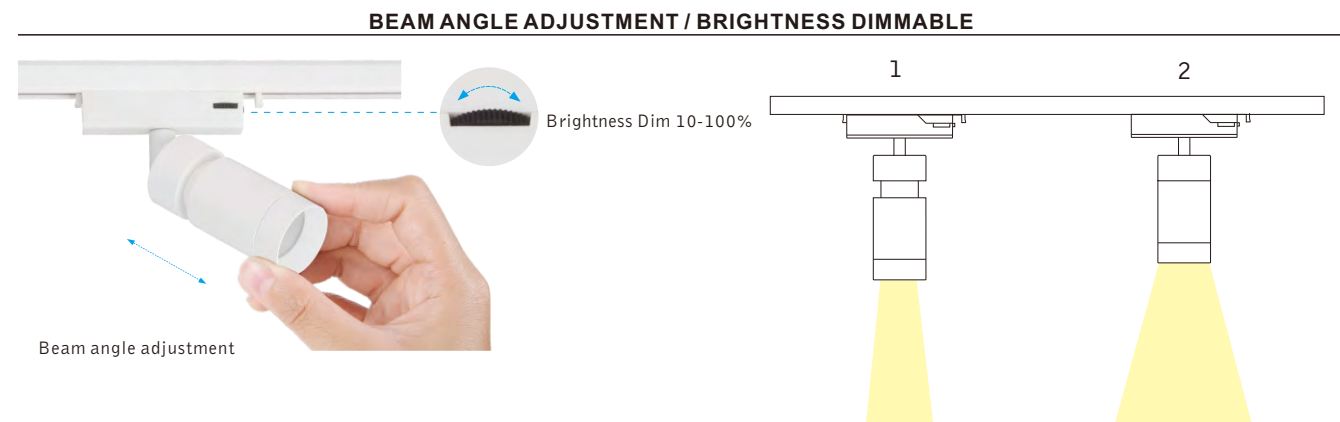
Housing: aluminium, paint.
Efficiency through lens: 40% - 65%

SA-532B/TU-223-D

Ra 90

LED	LUMINAIRE CONSUMPTION	INPUT	LED COLOR	COLOR
CREE	SA-532B/TU-223-D: 7.7W	DC 24V	<input type="checkbox"/> WW <input type="checkbox"/> NW	<input type="checkbox"/> WK <input type="checkbox"/> BJ

Housing: aluminium, paint.
Efficiency through lens: 40% - 65%





SA-532A Beam angle change from 5° - 30°
SA-532B Beam angle change from 10° - 40°

Titan.

Low Voltage - Micro Track Pendant Lights



TITAN Adapters for:  TU track
 TUC track




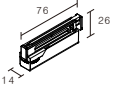
reddot winner 2021

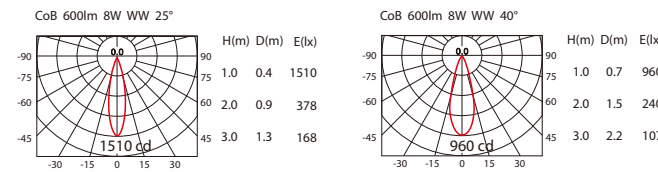
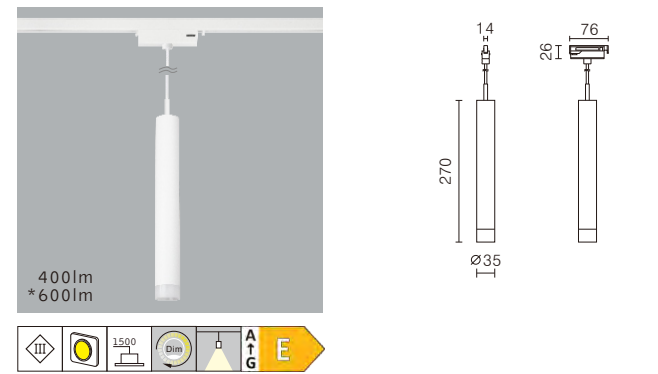
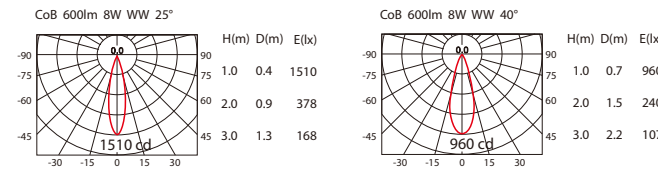
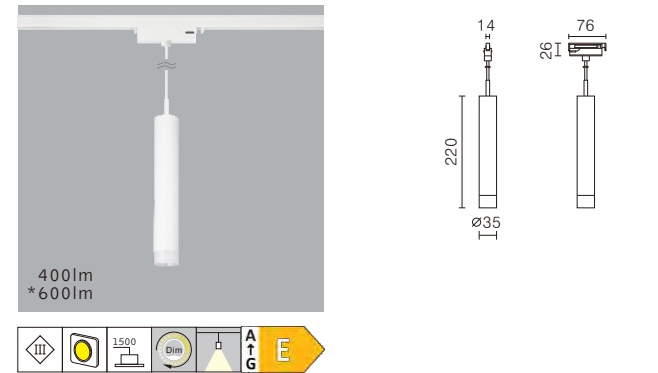
Features

- A pendant light with elegant appearance can be installed to the micro track system to meet designer requirement.
- The track can be powered by 24V voltage, is a much safer solution for the end user to adjust/install the luminaire. Offering two sizes and two lumen intensity to meet different application for the space.
- 24V ultra-low voltage system, push-switch installation mechanism is easy for installation. End user can easily shorten the length of cable (total 1500mm) by its smart structure with its internal prepared space.
- The matte front ring offers uniform and soft light effect while creating delightful ambient light for the environment.
- Accessories honey comb and front ring are ready on request.
- Individual brightness dimming function available.
- Rendering index as Ra90, to show the vivid color of the lighted objects.
- Eco-friendly LED chip good for energy saving and low maintenance cost.

Application

Mini size track pendant lights with its delightful light distribution perfectly meets architecture and interior designer request. The series is good to be applied in the restaurant, bar and café.

Specification of Adapter	
	<p>Adapter Dimable</p>  <p>Color: <input type="checkbox"/> WU <input type="checkbox"/> BK Plastic.</p> 
Output Current	
200mA ±5%	<p>TU-203-D Input: 24V Output: DC 2.8 - 18.7V Brightness Dim 10-100%</p>
350mA ±5%	<p>TU-213-D Input: 24V Output: DC 2.8 - 18.7V Brightness Dim 10-100%</p>



PAM-109A/TU-203-D · PAM-109A/TU-213-D Ra 90

CoB	LUMINAIRE CONSUMPTION	INPUT	LED COLOR	COLOR
CITIZEN	PAM-109A/TU-203-D: 5.3W *PAM-109A/TU-213-D: 8W	DC 24V	WW NW	WK BJ

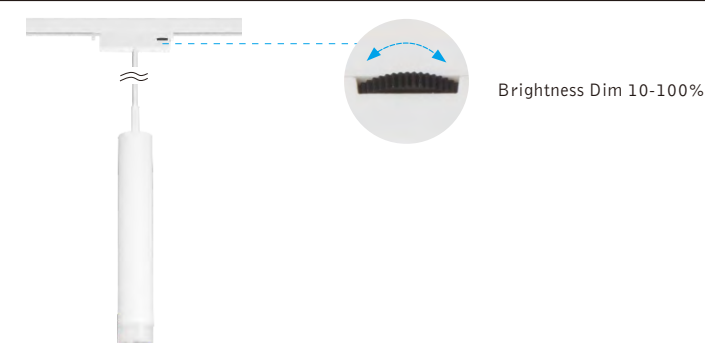
Housing: aluminium, paint.

PAM-109B/TU-203-D · PAM-109B/TU-213-D Ra 90



CoB	LUMINAIRE CONSUMPTION	INPUT	LED COLOR	COLOR
CITIZEN	PAM-109B/TU-203-D: 5.3W *PAM-109B/TU-213-D: 8W	DC 24V	WW NW	WK BJ

Housing: aluminium, paint.

BRIGHTNESS DIMMABLE




ACCESSORIES

Accessories		
Item code	Honeycomb	Front Hook for replacement of lampshade
All series	AC0-109H	AC-109A



Titan.

Low Voltage - Micro Track Linear Lights

TITAN Adapters for:  TU track
 TUC track



reddot winner 2021

Features

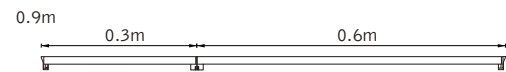
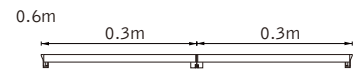
- A linear light with compact mechanism can well fit in Titan Micro track system and looks very clean and solid.
- With a new push-in button adapter design, LGM series is easy to adjust the light position.
- With bridge rectifier integrated into the adapter, installer can install the linear light into each direction.
- The Linear light is equipped with new anti-glare diffuser, create a very comfortable visual effect.
- Rendering index Ra90 perfect for hospitality application.
- There are two sizes of the LGM family ready for customer to choose.
- Eco-friendly LED chip good for energy saving and low maintenance cost.

Application

Micro linear lights with its uniform light emission meets architecture request. LGM series is a track general-lighting solution, combine with track spot light, perfect good for bar ,restaurant and living room to create a stylish and warm atmosphere.

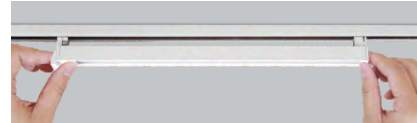
SCHEME OF 2 LINEAR LIGHTS CONNECTION

*End cap to end cap connection.

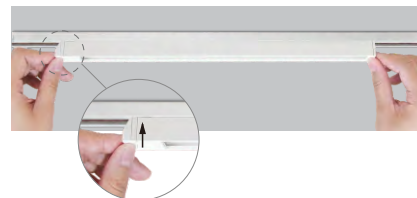


INSTALLATION INSTRUCTION

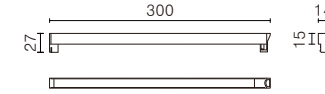
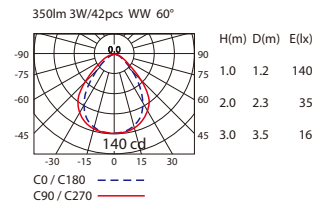
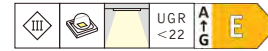
1. Insert the linear light in parallel to track.



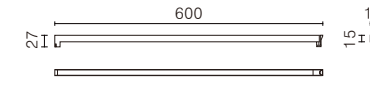
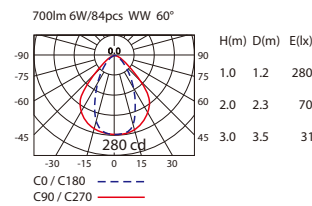
2. Push the end switch to make the electrode contact.



350lm



700lm



LGM-L01A Ra 90

LAMP	LUMINAIRE CONSUMPTION	INPUT	LED COLOR	COLOR
OSRAM 42pcs	3W	DC 24V	WW NW	WK BJ

Housing: aluminium, paint.

LGM-L01B Ra 90

LAMP	LUMINAIRE CONSUMPTION	INPUT	LED COLOR	COLOR
OSRAM 84pcs	6W	DC 24V	WW NW	WK BJ

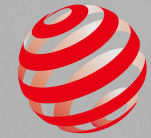
Housing: aluminium, paint.

LightQ

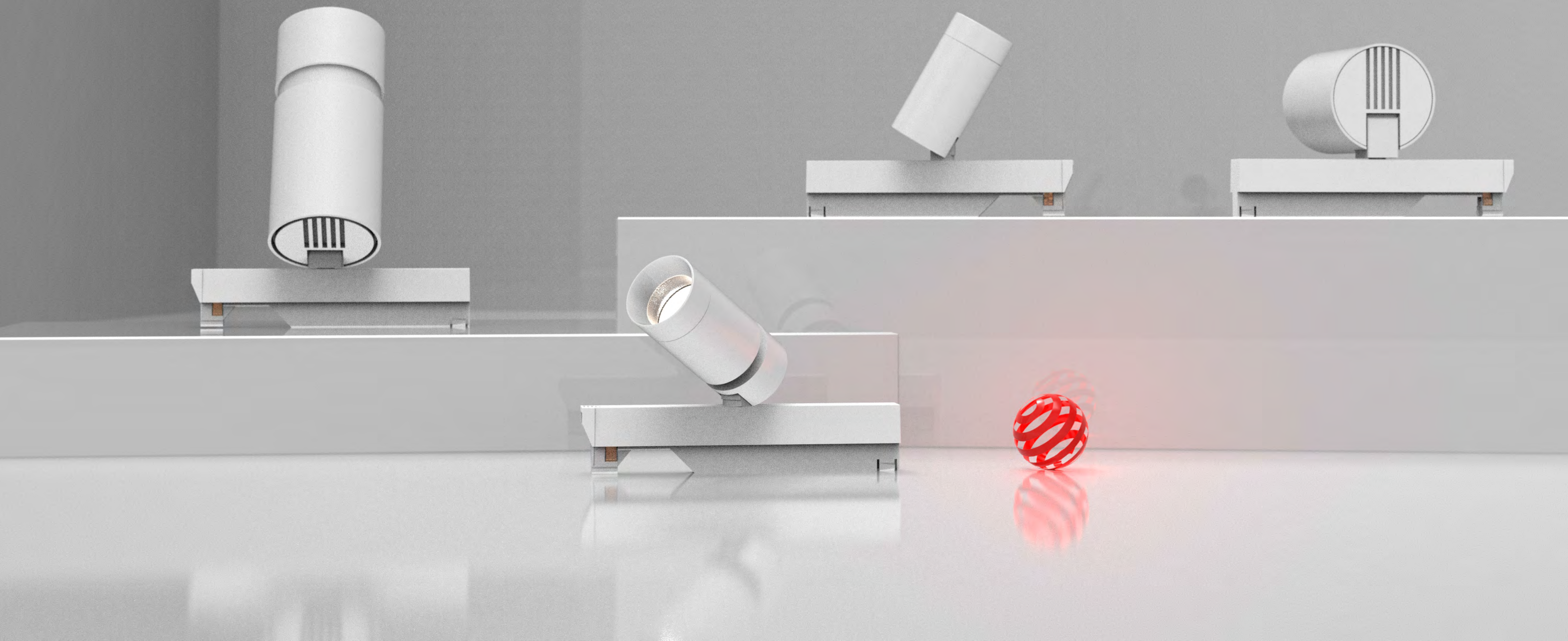
Connected by

WIZ

CASAMBI



reddot winner 2022
lighting design



Titan. LightQ - IoT Adpater

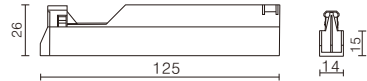
Features

- LightQ series adaptor is integrated with IOT modules, based on Wifi(WiZ) or Bluetooth(Casambi) protocol.
- Totally compatible with Titan low voltage track, TU, TUC, and TUH track.
- Thanks to its ultra compact size, after installed on TUC, TUH, no redundant part is shown outside over the surface.
- Built-in DC to DC solution with 24V Input to conform SELV regulation.
- Intuitive on/off switch on the adaptor, user can use thumb to easily install on the track.
- Thanks to the the unique IoT technology integrated by WiZ, even turning off the router, end-users still can switch and dim the light through the remote controller.
- For the paring and other details, please check the user manual on the WiZ & Casambi official website for more information.



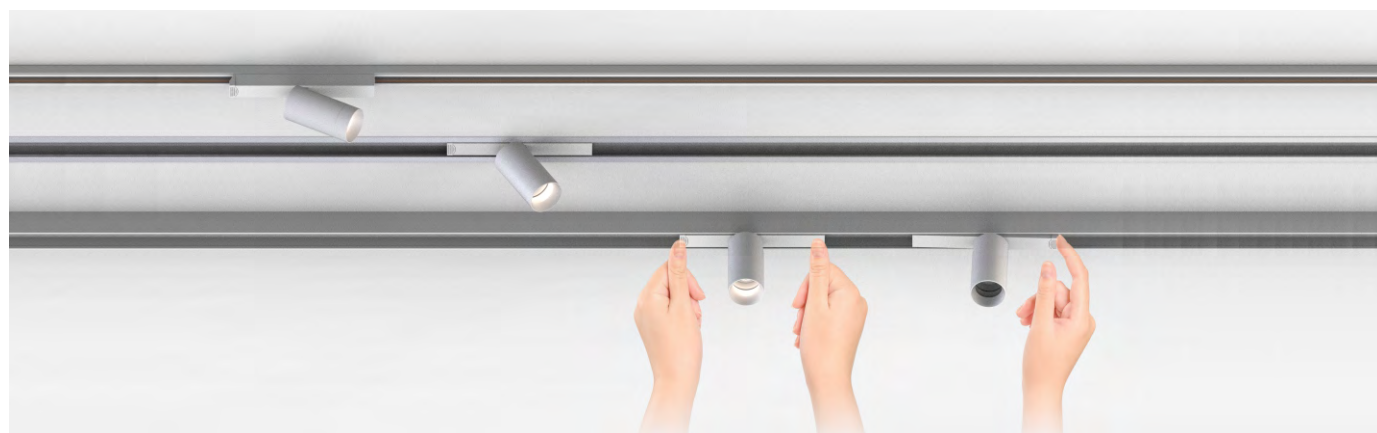
TITAN Low Volatage Track transadpater: Plastic.
Input: DC 24V
Output: 200/350/500mA
Color: □ WU ■ BK

TU-212

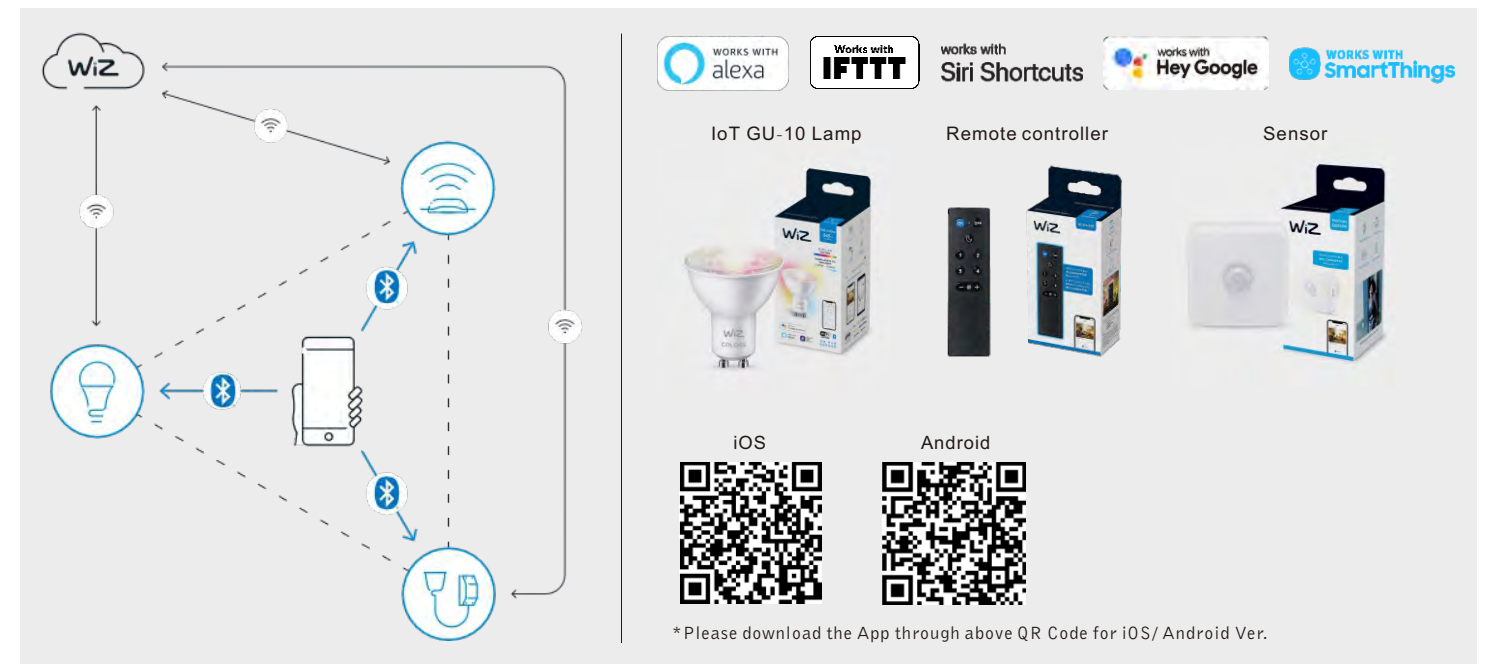


	WiZ	CASAMBI
Output Current		
200mA	TU-212A-Wiz	TU-212A-CA
350mA	TU-212B-Wiz	TU-212B-CA
500mA	TU-212C-Wiz	TU-212C-CA

INTUITIVE SWITCH DESIGN



LIGHTING CONTROL of WiZ



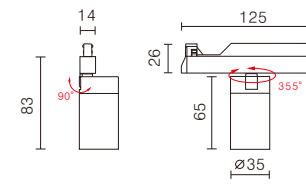
LIGHTING CONTROL of Casambi



Titan.

LightQ - Beam Angle Fixed Micro Spot Lights

TITAN Adapters for:  TU track  TUC track  TUH track



SAM-542A/TU-212A-WiZ、SAM-542A/TU-212A-CA **Ra 90**

CoB	LUMINAIRE CONSUMPTION	INPUT	LED COLOR	COLOR
LUMINUS	WiZ: 5W CA : 4.3W	DC 24V	WW NW	WK BJ

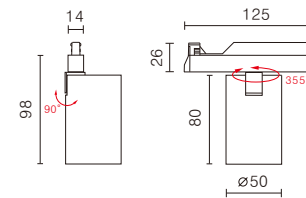


SAM-542A/TU-212B-WiZ、SAM-542A/TU-212B-CA **Ra 90**

CoB	LUMINAIRE CONSUMPTION	INPUT	LED COLOR	COLOR
LUMINUS	WiZ: 8.2W CA : 7.7W	DC 24V	WW NW	WK BJ

Features

- The very tiny micro track light system comes with elegant and mini-size features provide a very aesthetic out looking for interior design respect.
- Product series with good optical lens can provide an excellent light effect to replace halogen lamp application.
- The track can be powered by 24V voltage, is a much safer solution for the end user to adjust/install the luminaire.
- To enable end-user mount the spotlight without direction to be noticed within DC circuit, bridge rectifier is integrated into individual adapter to rectify the polarity.
- Micro track spot lights are with push-click-on adapter mechanism, easy install.
- The series can achieve 90-degree tilting and 355 degrees rotating adjustment.
- Micro track spot is designed with good glaring control hook; accessories honeycomb also ready on request.
- Individual brightness dimming function available.
- Eco-friendly LED chip good for energy saving and low maintenance cost.





SAM-543A/TU-212C-WiZ、SAM-543A/TU-212C-CA **Ra 90**


CoB	LUMINAIRE CONSUMPTION	INPUT	LED COLOR	COLOR
LUMINUS	WiZ: 11.8W CA : 11W	DC 24V	WW NW	WK BJ



Application

Mini size track and luminaire body; with precise light distribution is perfectly meets architecture and interior designer request. The series is good for highlighting artworks, restaurant, and private house.

Lumen	Output Current	WiZ	CASAMBI
			
400lm	200mA	TU-212A-WiZ	TU-212A-CA
660lm	350mA	TU-212B-WiZ	TU-212B-CA
950lm	500mA	TU-212C-WiZ	TU-212C-CA

Accessories	
Item code	Honeycomb
SAM-542A	AC0-109H
SAM-543A	AC0-2800

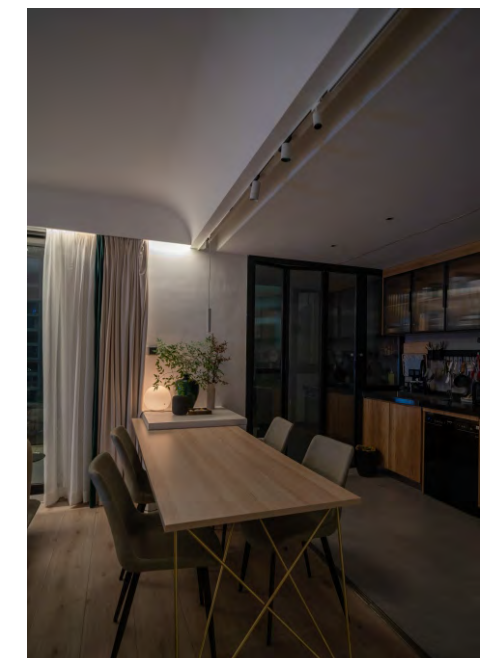
SCENE APPLICATION



Welcome Mode



Evening Time



Sleep Mode

Titan. LightQ - Zoomable Spot Lights

TITAN Adapters for:  TU track  TUC track  TUH track



reddot winner 2022

Features

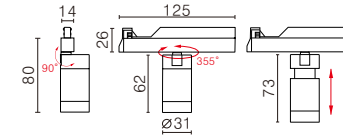
- The very compact micro track light system with elegant and mini-size design.
- 24V ultra-low voltage system, push-switch installation mechanism is very end-user friendly.
- To enable end-user mount the spotlight without direction to be noticed within DC circuit, bridge rectifier is integrated into individual adapter to rectify the polarity.
- Micro track spot lights, W, W, with delicated mechanism and neat out-looking.
- Beam angle adjustable, from 10°-40°, both with high efficient and uniform light output.
- Individual brightness dimming function available.
- Compacted with short width and height, perfectly to meet the aesthetical requirement for architect and designer.
- Eco-friendly LED chip features as the energy saving and low maintenance cost.
- Color rendering better than Ra90.
- This series is convenient for end-user to adjust the focus and beam angle, meanwhile achieve the uniform light output, which is under the compromise to lower the efficiency of the luminaire.

Application

Precise light distribution is not only good for highlighting artworks in the showcase, but also good for restaurant and other private house.



550lm

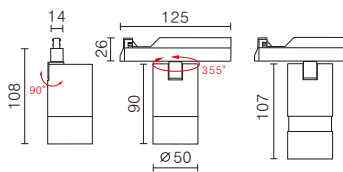


SAM-532B/TU-212C-WiZ、SAM-532B/TU-212C-CA Ra 90

LED	LUMINAIRE CONSUMPTION	INPUT	LED COLOR	COLOR
CREE	WiZ: 7.9W CA : 7.4W	DC 24V	WW NW	WK BJ



850lm








SAM-533C/TU-212C-WiZ、SAM-533C/TU-212C-CA Ra 90

LED	LUMINAIRE CONSUMPTION	INPUT	LED COLOR	COLOR
LUMINUS	WiZ: 12.3W CA : 11.6W	DC 24V	WW NW	WK BJ

SCENE APPLICATION



Lumen	Output Current	WiZ	CASAMBI
			
550lm	500mA	TU-212C-WiZ	TU-212C-CA
850lm			

Accessories	Honeycomb	Sculptured Glass	Texture Glass
			
Item code	Honeycomb	Sculptured Glass	Texture Glass
SAM-532B	AC0-109H		
SAM-533C	AC-4992H	AC-4992S	AC-4992W



Sales
Finland
Kuninkaanmäentie 120B
01260 Vantaa
+358 40 9008520
info@johnberger.fi
www.johnberger.fi

Estonia
Laki 9A
10621 Tallinn
+372 +372 654 6604
info@joihnberger.ee
www.johnberger.ee